

# SOLAR POWERED **FLAT MARKER**

Solar Powered Flat Marker can be installed on the flexible pavement between skip lines, center of the road. It starts automatically in absence of light at night time.

## Specification

### Model No : GAFM (III)

#### Solar Panel

Type : Multi / Monocrystalline  
Operating Voltage : 3.5 V  
Operating Current : 250 mA

#### Battery

Material : Rechargeable  
Operating Voltage : 12 V  
Capacity : 1200 mA  
Operating Time : 12 hours at Night

#### LED

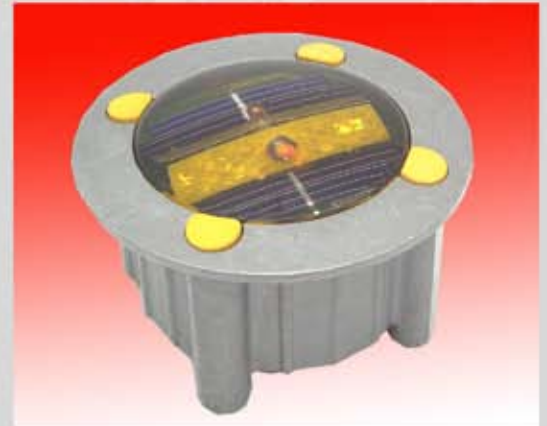
Visibility : > 500m  
Colour : Red / Yellow / White  
Flash Rate : 200± / min  
Flashing Type : Flashing / Steady  
Quantity : Double or single side

Material : Upper Parts : Clear PC ( UV Coating )  
Lower Parts : Aluminium Alloy

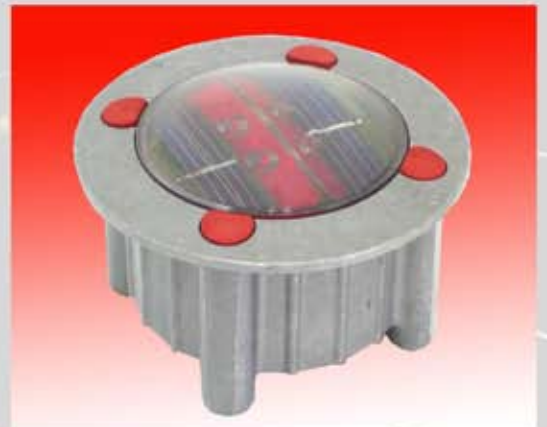
Operating Temperature : -40°C to 70°C

Fixture Body : Diameter 112.5mm x Height 69mm  
Length 99mm

Weight : 600g



**YELLOW**



**RED**

